



OLD LUCE
DEVELOPMENT TRUST

SUMMER 2024

MEMBERS: 205

Welcome

Welcome to our Summer Update, the year seems to be flying by already!

The Trust has been very busy moving forward on a number of our projects all at the same time. This has included refurbishing the former Woodside Industrial Estate, which will now revert back to the original site name of Ballinlach, and realising a long-held dream for the Dunragit community of a brand-new Hub with a grand opening planned for late summer.

As the weather improves, we will also be able to get out and about much more in the Glen, with path, fencing and other upgrades also planned for our beautiful community woodland.

Steven Newton, Vice Chair





Our Projects

Dunragit Community Hub

An archaeology survey was undertaken by Guard Archaeology in March and the final report submitted to the Council archaeologist. No significant archaeology was found on site.



Example of the cabin proposed for the Hub



A community consultation was held in Glenluce Public Hall on 29 April for Dunragit residents to have their say on choosing the fixtures and fittings for their new Community Hub, which is due to open in late summer. We would like to thank Howdens kitchens and Kinnears for providing sample kitchen doors, worktops and flooring on the night. The cabin has now been ordered and the build is due to start in June, with delivery in late July or August.

The electricity connection is approved and ready to go, but we are having some difficulties locating the mains water pipe that runs through the site, but not where we thought. Scottish Water are helping us with this and, once located, we will be able to confirm all the connections and drainage plans.

The Building Warrant has been applied for and is under consideration. Once utilities and Building Warrant are confirmed, our design team will pull together all the information for us to tender the groundworks, so that this can be completed whilst the cabin is built offsite.





Dunragit community consultation attendees

Industrial Estate

Tarff Valley vacated unit 2 in mid-December.

Electrical upgrade works have now almost been completed and the entire building has been re-clad, which is a refreshing change from the faded red to a now inviting, fresh green. Doors have been upgraded and/or relocated to improve access and a fresh coat of paint has been applied to the lower walls.

The site name has been officially changed from Woodside to Ballinlach Industrial Estate and new signage will be commissioned once all of the new tenants are confirmed.

Mathers Industrial Dairy Equipment Ltd are now occupying Units 2 and 3 at the front and gradually moving in to begin operating in Glenluce.

We are still following up on expressions of interest for tenants for the rear Units 1 and 4, so please let us know if you are an active local business that would be interested.



The newly refurbished Ballinlach Industrial Estate



Brambles

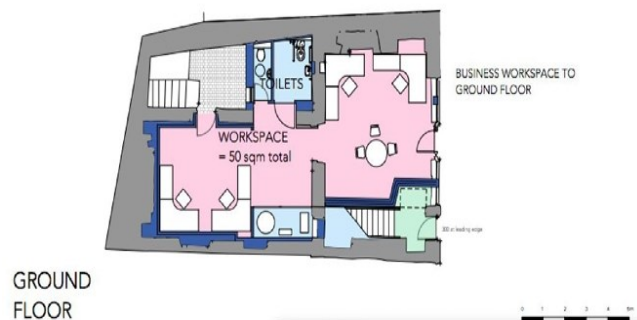
At a previous AGM, we were asked to reconsider a café /restaurant in the Brambles building following the closure of the Glen café. We spent time exploring various options including, a café / restaurant, weekly-rented self-catering holiday accommodation, B&B / hotel-style holiday accommodation, commercial space or a mix of two of the above.

After careful consideration and taking advice from architects and those with experience in the hospitality sector in the area, establishing a café/restaurant within the Brambles building proved unfeasible due to space limitations and concerns about market support. We understand that this decision may disappoint those who envisioned a café / restaurant. In response, we're open to supporting volunteers interested in setting up a monthly pop-up café in the village hall, which we feel is a more sustainable way to provide a community café space.

It is our position not to compete with existing businesses in the village, potentially putting them at risk. The food offering in the area through the Crown and the golf course has increased and there are numerous options for weekly-rented holiday accommodation in the area.

However, we remain committed to enhancing our community's offerings. To address the recognised shortage of B&B-style accommodation in the area, we have decided to create two nightly-rented, self-catered studio apartments on the first floor, with flexibility to be rented as one unit or together. Additionally, we will maintain rentable commercial space on the ground floor. flexible enough to accommodate various options, including office space, retail or a takeaway outlet. We have to define a use for planning purposes and have chosen class 2 'Financial, professional or any other service expected in shopping areas', which can be changed to class 1 'Shop' without the need to apply for change of use.

It has been a long process, with many set backs, but we are now close enough to raising sufficient funds for the redevelopment of the building that the new design will be submitted for planning permission in the coming weeks and we aim to finally reopen this building with its new purpose in early 2026.





Glenluce Healthy Living Campus

The Trust continues to seek funding to build the new surgery as part of the Glenluce Healthy Living Campus. Unfortunately, a thorough review of existing funding streams has not identified any potential funders. Whilst there is a lot of agreement that the surgery is needed, it is falling outside the scope of existing funds. It is now a case of looking at new funding sources as they are announced to see if anything fits.

Village Square

Sian Roberts has been carrying out regular garden bed maintenance and there was a bit of cleaning up to do also following the winter storms. The spring tulips in particular have been putting on a gorgeous display of colour recently in the Square.

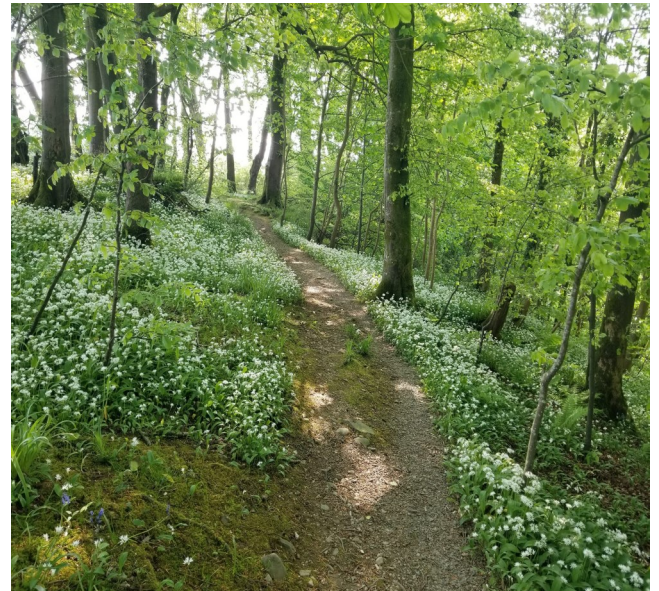


The Glen

As the weather continues to improve, we will be commencing work on fencing, drainage, path and footbridges improvements in conjunction with the adjoining landowner.

Friends of The Glen volunteers have acquired more young trees from the Woodland Trust and are looking forward to more planting sessions and ivy removal with assistance from Glenluce Primary School students and teachers.

Please note there is some wood in the Glen for the Forest School and this should not be taken by residents.



Glenluce Public Hall

Long-awaited Hall roof maintenance and internal clock tower upgrade work has now been completed by Council contractors.

Our new Hallkeepers, Sue Murkowski and Christian Blackwood, have settled well into their role with their friendly faces now your first point of contact for booking this versatile, richly historic community facility, either online or over the phone.

If you have any kind of activity or event in mind, please do reach out for further information, as we are here to help.



Boccia-New Age Curling roll every Monday
10.30am-noon and Thursday 1.30-3.00pm

The weekly Post Office service is available every Tuesday from 11.30am till 12.30pm and the Community Shop volunteers are ready to welcome you down the ramp to shop for treasure and enjoy a blether every Tuesday 10am-1pm, Thursday 1-4pm and Saturday 11am-2pm.

All are also welcome to come along for a gentle stretch, strengthen and socialise at Chair Tai-Chi every Wednesday 11am-12 noon.



The badminton equipment has been getting a good workout and there has been a variety of parties and community group meetings as well.

The private downstairs Meeting Room also offers an ideal space to hire for a smaller group meeting or individual study space.

We would love to see a wider variety of activities including arts and crafts, music, exercise youth events and much more happening at the Hall, the sky's the limit!

YOUR Hall needs YOU!

If you'd like to help as a volunteer, or arrange or attend any kind of activity, group or event, please let us know. The Trust is available to provide support with administration assistance, grants advice and sponsorship if you feel your group, activity or event might not be eligible for particular funding. You can also apply for a micro-grant for up to £500 on our website to help cover costs.

If have any queries or would like to book any of our facilities, please visit www.oldluce.org.uk/glenluce-hall and read through our Terms of Hire.

Christmas In Old Luce

The Christmas lights came down promptly and there were no losses of function in Glenluce this year.

Community Council lodged a request with D&G Council to attend to the street lights that were out in Dunragit which were restored recently.

A connection point is being factored into the new Dunragit Community Hub for additional Christmas lights this year.



The spirit of Christmas at Glenluce Public Hall



OLD LUCE

DEVELOPMENT TRUST

SUMMER 2024

MEMBERS: 205



BOCCIA AND NEWAGE CURLING GROUP

Glenluce Public Hall

MONDAYS 10.30 AM TO 12 NOON
THURSDAYS 1.30 PM-3.00 PM

ENQUIRIES to 01581 300 669

ALL WELCOME!



COMMUNITY SHOP

OPEN

TUESDAY 10AM-1PM
THURSDAY 1PM-4PM
SATURDAY 11AM-2PM

TREAT YOURSELF TO
SOME RETAIL THERAPY



ENTRANCE DOWN THE RAMP
GLENLUCE PUBLIC HALL

Energise: Yoga for Summer

Starts Thursday 30th May 6-7pm
(Solstice Social on Thursday 20th June)

Yoga Venture Scotland

Meditation
Pranayama
Vinyasa Flow
Savasana



£8 per class (solstice social £10) or
£47 for block of 6
Booking essential via: yogawithjustine7@gmail.com
f [yogawithjusty](https://www.facebook.com/yogawithjusty)



Chair Tai-Chi

Glenluce Public Hall
Every Wednesday
11am-12 noon
All welcome!

SUMMER SOLSTICE
YOGA SOCIAL @ SANDS OF LUCE
YOGA VENTURE SCOTLAND

THURSDAY
20TH JUNE
@ 5.45 PM – 7.30PM
£10



MEDITATION
YOGA FLOW
SEA DIP
FIRE & SOCIAL
HOT DRINKS + CAKE



BOOKING VIA: [YOGAWITHJUSTINE7@GMAIL.COM](mailto:yogawithjustine7@gmail.com) /
f [YOGAWITHJUSTY](https://www.facebook.com/yogawithjusty)  [YOGAVENTURESCOTLAND](https://www.instagram.com/yogaventurescotland)



What's Happening at Your Hall?

Monday (weekly)

Boccia-New Age Curling 10.30am-12 noon

Tuesday (weekly)

Community Shop 10.00am-1.00pm
Post Office Service 11.30am-12.30pm

Wednesday (weekly)

Chair Tai-Chi 11.00am-12.00pm

Thursdays (weekly)

Boccia-New Age Curling 1.00-3.30pm
Community Shop 1.00-4.00pm

Saturday (weekly)

Community Shop 11.00am-2.00pm



Membership

Membership of Old Luce Development Trust is open to anyone who supports the work of the Trust. Full Membership is open to all adult permanent residents of the Parish, Junior Membership is open to anyone under the age of 18 and Associate Membership is open to anyone who lives out with the Parish. Some grant providers consider the proportion of residents in an area as part of their decision-making process, so we encourage all eligible members of the community to join the Trust. Further details about each type of membership and how to apply can be found online at www.oldluce.org.uk/membership.

Directors

- | | |
|----------------------------|-----------------|
| Mike Lane (Chair) | Cheryl Garrity |
| Diane Lowe (HR) | Adele McCallum |
| Lorna McDowall (Treas.) | Jackie Plunkett |
| Steven Newton (Vice Chair) | Richard Rankin |
| Ewan Cameron | Kippy Thomson |
| Neil Douglas | |

Old Luce Parish



Contact Us

thetrust@oldluce.org.uk

01581 300767

Our office is staffed up to 4 days a week